

RetCam II

ROP Screening in the NICU

The standard screening procedure followed by Dr. Ells is as follows: The infant eyes are dilated 45-60 minutes before the exam. After a topical anesthetic is applied, a lid speculum is put in place and a coupling gel is applied to the camera's lens. The RetCam is placed gently on the eye and a posterior pole image is taken. Next the temporal and nasal retinal fields are imaged and then the superior and inferior retinal quadrants are captured. The wide-field 130 degree lens presents a large field-of-view of the retina to the physician.



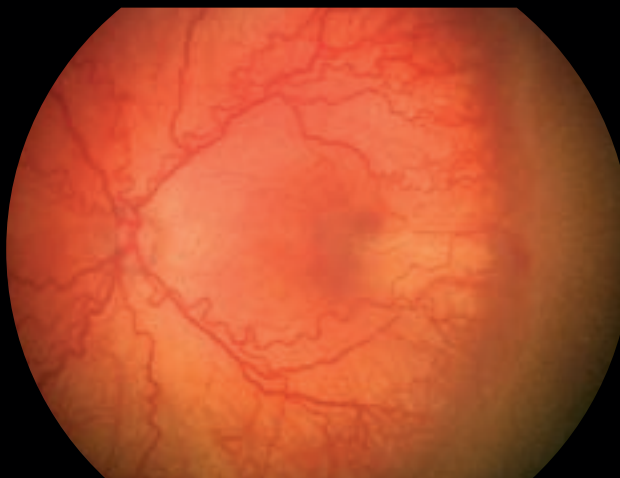
Anna L. Ells, MC, FRCS(C) Division of Ophthalmology
University of Calgary, Calgary, Alberta Canada



Anna L. Ells, M.D., FRCS (C), University of Calgary, Calgary, Alberta Canada



Anna L. Ells, M.D., FRCS (C), University of Calgary, Calgary, Alberta Canada



Leslie MacKeen, BSc, OA, CRA, Hospital for Sick Children, Toronto, Ontario Canada



Prof. Dr. med. Birgit Lorenz, Regensburg, Germany