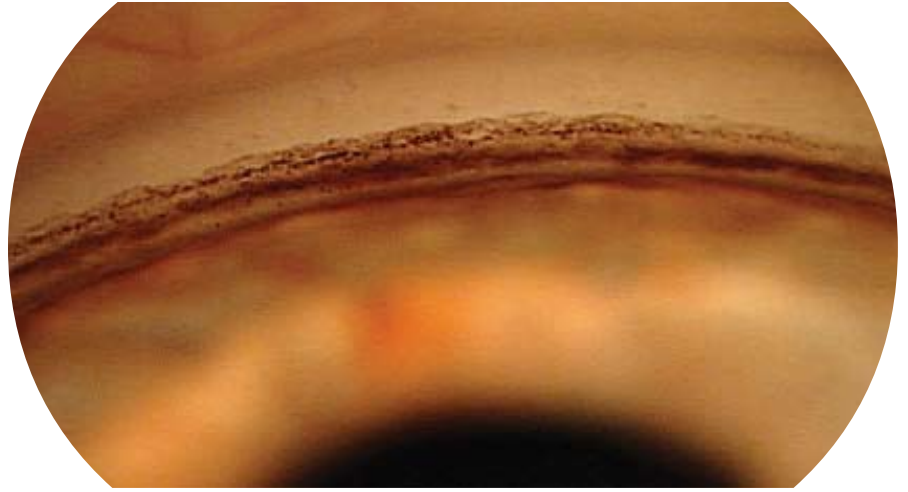
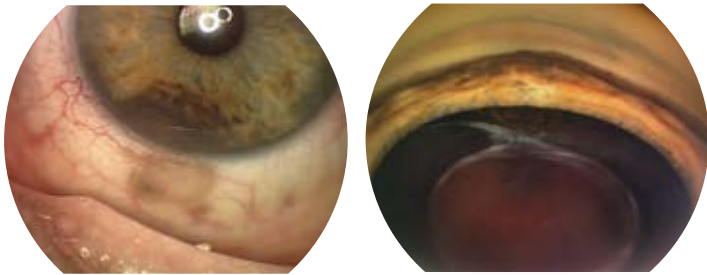


Anterior Segment Clinical Imaging

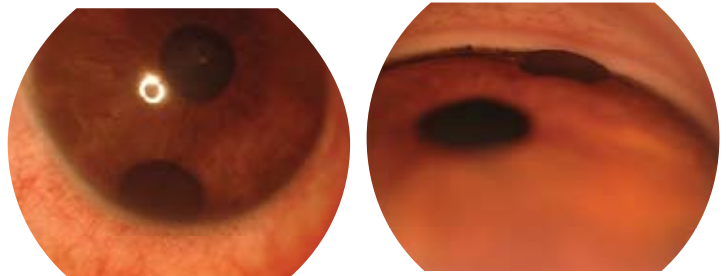
RetCam can be used to view and document anterior segment lesions including lens pathology, and as a direct gonioscopy camera to image the anterior chamber angle.



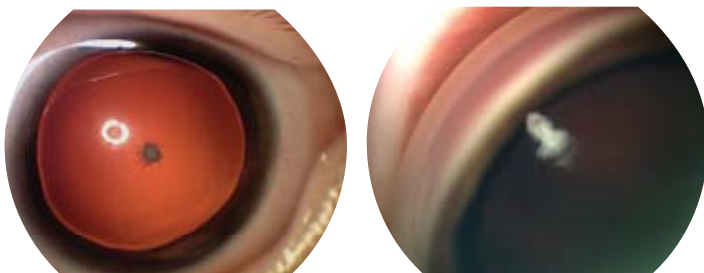
Glaucoma with Pigment Anterior to Trabecular Meshwork



Pigmented Ciliary Body Tumor



Iris Nevus



Aniridia with Anterior Pyramidal Cataract

For more information on the RetCam family of products contact Clarity Medical Systems at 1-800-215-6005 or www.claritymsi.com.

Clarity Medical Systems • Pleasanton, CA • 1-800-215-6005 • www.claritymsi.com

